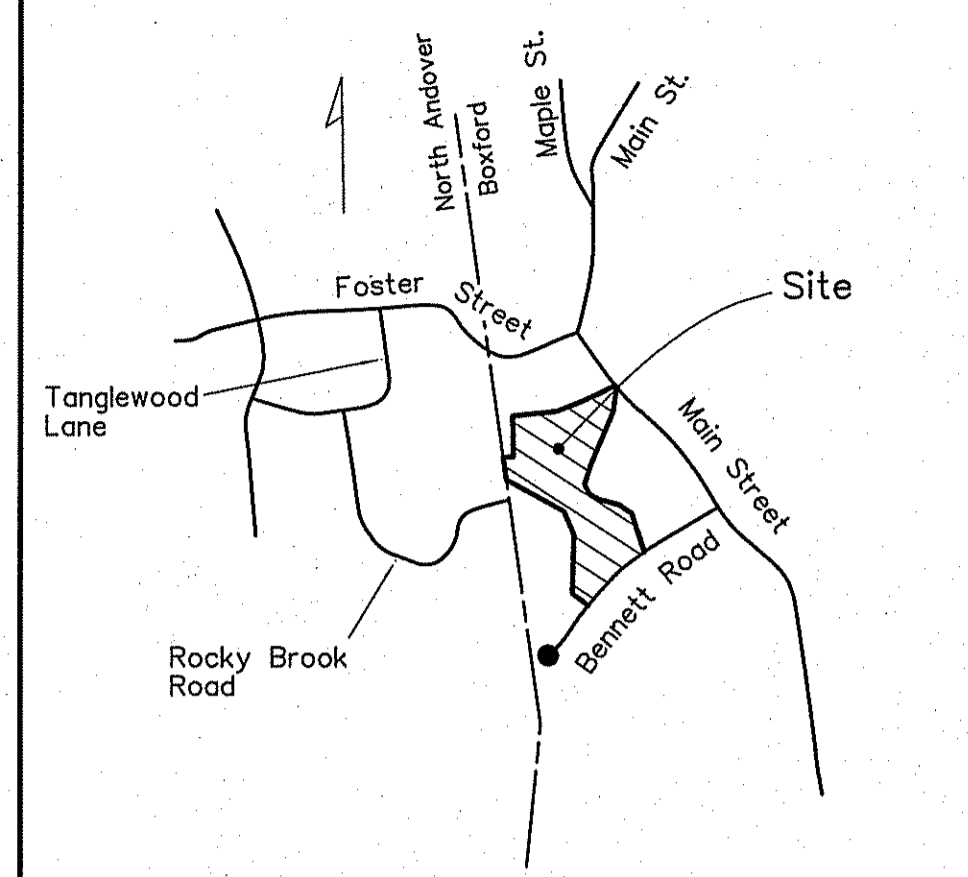


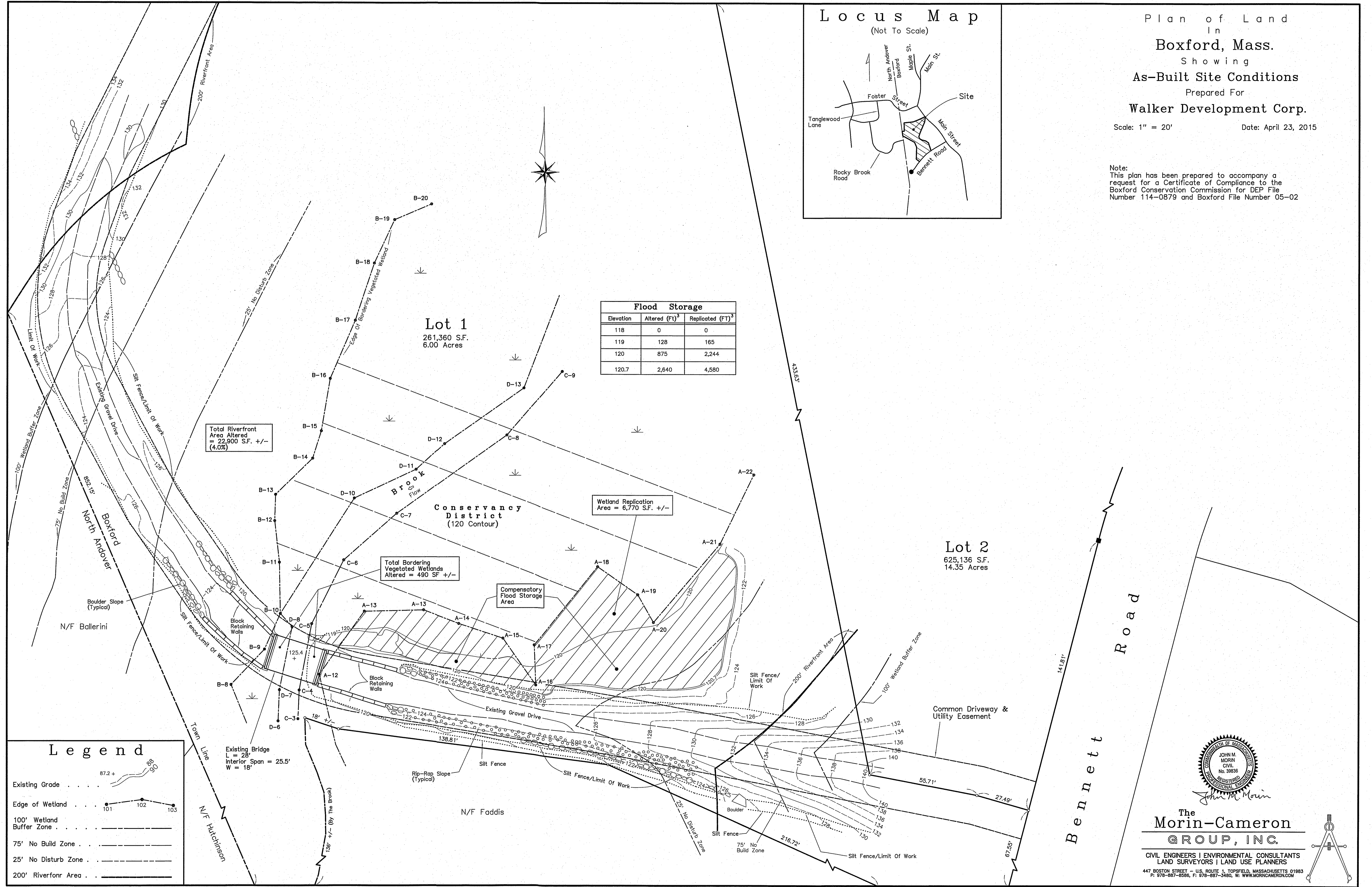
Locus Map
(Not To Scale)



Plan of Land
In
Boxford, Mass.
Showing
As-Built Site Conditions
Prepared For
Walker Development Corp.

Scale: 1" = 20' Date: April 23, 2015

Note:
This plan has been prepared to accompany a request for a Certificate of Compliance to the Boxford Conservation Commission for DEP File Number 114-0879 and Boxford File Number 05-02



Flood Storage

Elevation	Altered (Ft) ³	Replicated (Ft) ³
118	0	0
119	128	165
120	875	2,244
120.7	2,640	4,580

Total Riverfront Area Altered = 22,900 S.F. +/- (4.0%)

Total Bordering Vegetated Wetlands Altered = 490 SF +/-

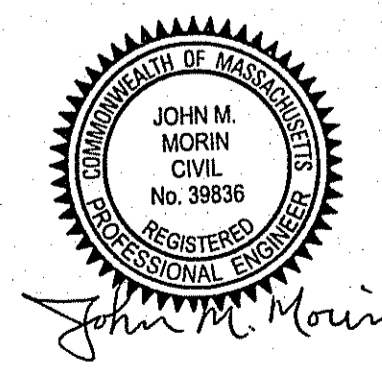
Wetland Replication Area = 6,770 S.F. +/-

Compensatory Flood Storage Area

Legend

- Existing Grade 87.2 +
- Edge of Wetland 101 102 103
- 100' Wetland Buffer Zone
- 75' No Build Zone
- 25' No Disturb Zone
- 200' Riverfront Area

Existing Bridge
L = 28'
Interior Span = 25.5'
W = 18'



The Morin-Cameron GROUP, INC.

CIVIL ENGINEERS | ENVIRONMENTAL CONSULTANTS
LAND SURVEYORS | LAND USE PLANNERS
447 BOSTON STREET - U.S. ROUTE 1, TOPSFIELD, MASSACHUSETTS 01083
P: 978-887-8586, F: 978-887-3480, W: WWW.MORINCAMERON.COM

