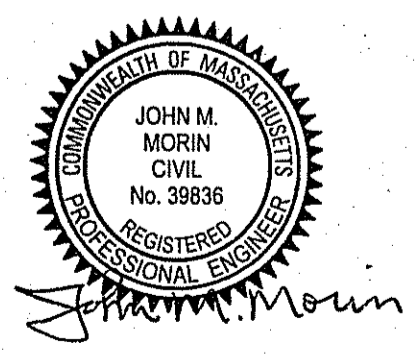
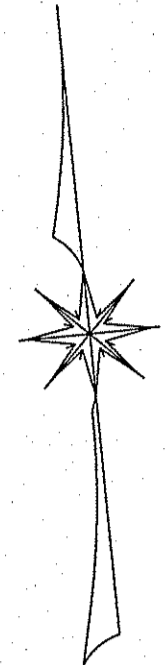
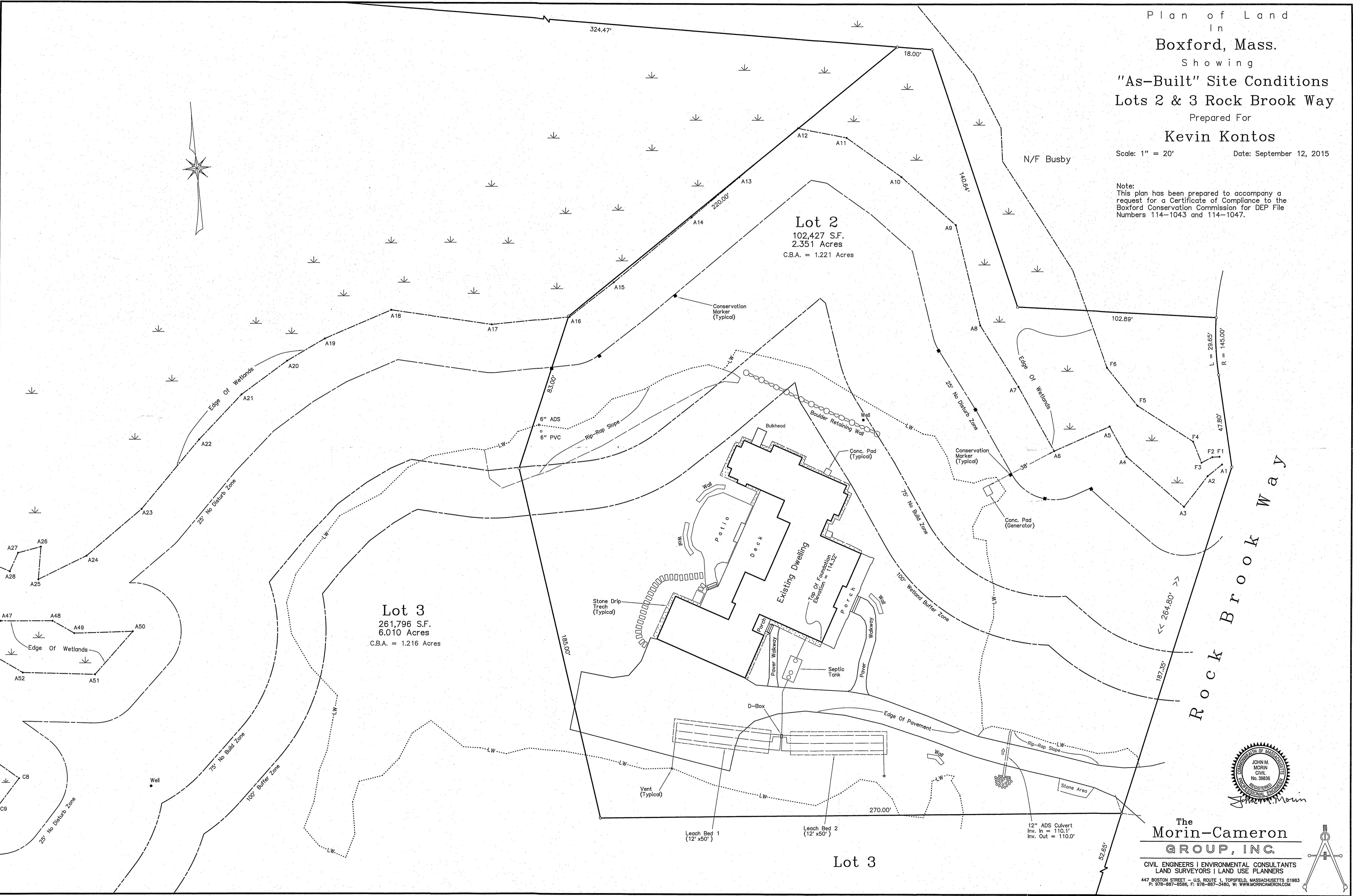


Plan of Land
In
Boxford, Mass.
Showing
"As-Built" Site Conditions
Lots 2 & 3 Rock Brook Way
Prepared For
Kevin Kontos

Scale: 1" = 20' Date: September 12, 2015

Note:
This plan has been prepared to accompany a
request for a Certificate of Compliance to the
Boxford Conservation Commission for DEP File
Numbers 114-1043 and 114-1047.



The
Morin-Cameron
GROUP, INC.

CIVIL ENGINEERS | ENVIRONMENTAL CONSULTANTS
LAND SURVEYORS | LAND USE PLANNERS
447 BOSTON STREET - U.S. ROUTE 1, TOPSFIELD, MASSACHUSETTS 01983
P. 978-897-8586, F. 978-897-3460, W. WWW.MORINCAMERON.COM

