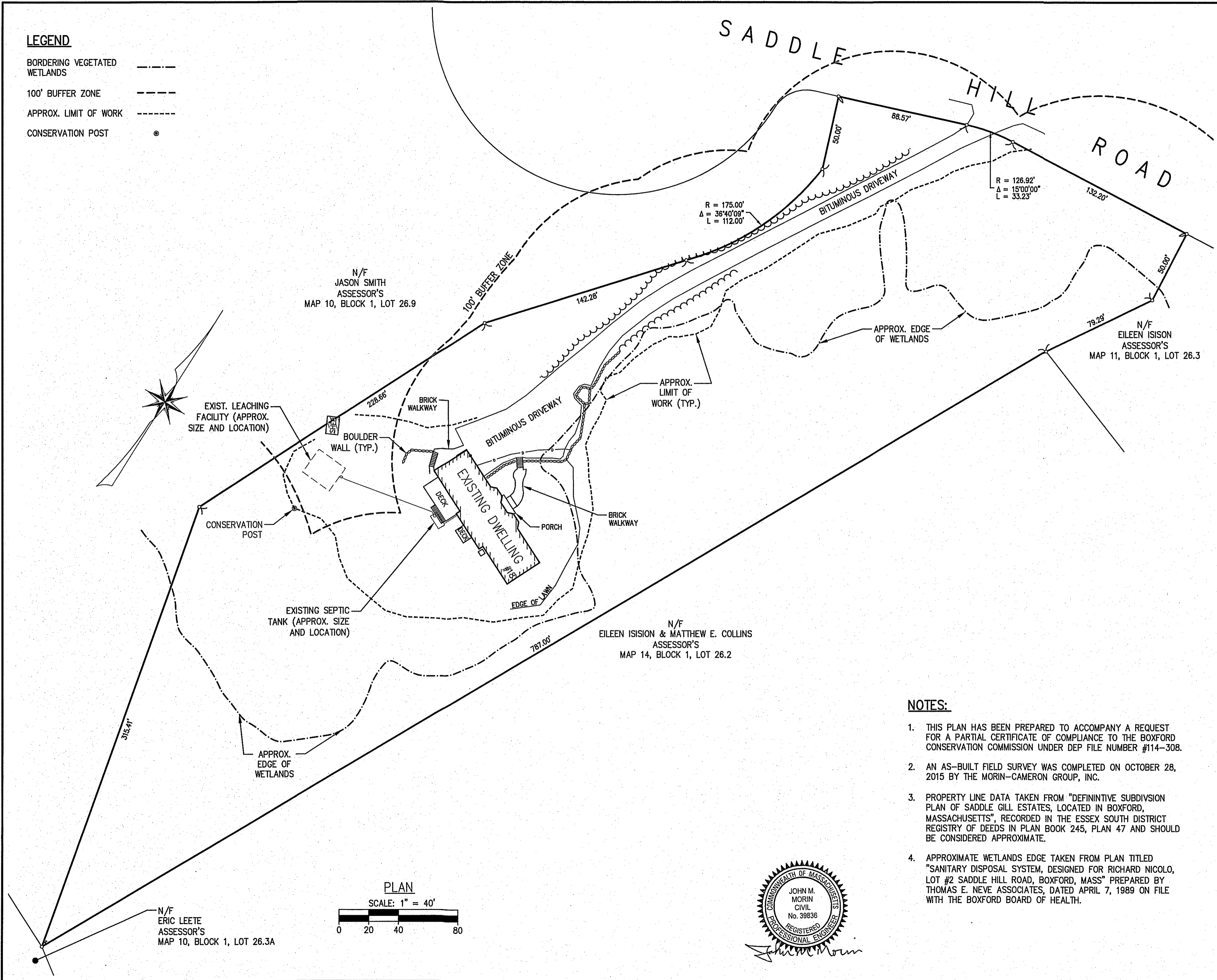


**LEGEND**

- BORDERING VEGETATED WETLANDS
- 100' BUFFER ZONE
- APPROX. LIMIT OF WORK
- CONSERVATION POST



**The Morin-Cameron GROUP, INC.**

CIVIL ENGINEERS | ENVIRONMENTAL CONSULTANTS  
LAND SURVEYORS | LAND USE PLANNERS

BOSTON STREET - U.S. ROUTE 1, TOPSFIELD, MASSACHUSETTS 01883  
P: 978-887-8586, F: 978-887-3480, W: WWW.MORINCAMERON.COM

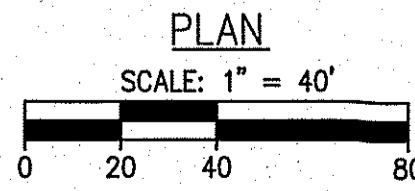
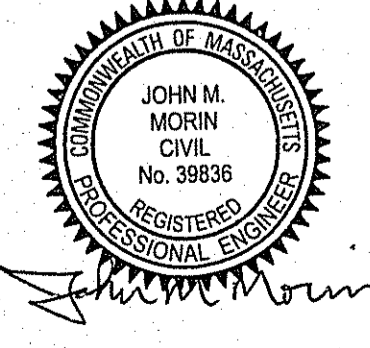
FIELD SURVEY BY: PM/SR  
DRAFTED BY: WAS  
CHECKED BY: JMM  
APPROVED BY: JMM  
SCALE: 1"=40'  
DATE: NOVEMBER 3, 2015

REVISIONS	
NO.	DESCRIPTION

**PLAN OF LAND IN BOXFORD, MASSACHUSETTS 18 SADDLE HILL ROAD**  
(ASSESSOR'S MAP 10, BLOCK 1, LOT 26.10)  
PREPARED FOR:  
**JAMES MERRIMAN**

PROJ. NO. #3414-CCAB  
SHEET NO. 1 OF 1

- NOTES:**
- THIS PLAN HAS BEEN PREPARED TO ACCOMPANY A REQUEST FOR A PARTIAL CERTIFICATE OF COMPLIANCE TO THE BOXFORD CONSERVATION COMMISSION UNDER DEP FILE NUMBER #114-308.
  - AN AS-BUILT FIELD SURVEY WAS COMPLETED ON OCTOBER 28, 2015 BY THE MORIN-CAMERON GROUP, INC.
  - PROPERTY LINE DATA TAKEN FROM "DEFINITIVE SUBDIVISION PLAN OF SADDLE GILL ESTATES, LOCATED IN BOXFORD, MASSACHUSETTS", RECORDED IN THE ESSEX SOUTH DISTRICT REGISTRY OF DEEDS IN PLAN BOOK 245, PLAN 47 AND SHOULD BE CONSIDERED APPROXIMATE.
  - APPROXIMATE WETLANDS EDGE TAKEN FROM PLAN TITLED "SANITARY DISPOSAL SYSTEM, DESIGNED FOR RICHARD NICOLO, LOT #2 SADDLE HILL ROAD, BOXFORD, MASS" PREPARED BY THOMAS E. NEVE ASSOCIATES, DATED APRIL 7, 1989 ON FILE WITH THE BOXFORD BOARD OF HEALTH.



N/F ERIC LEETE  
ASSESSOR'S  
MAP 10, BLOCK 1, LOT 26.3A

N/F JASON SMITH  
ASSESSOR'S  
MAP 10, BLOCK 1, LOT 26.9

N/F EILEEN ISISON  
ASSESSOR'S  
MAP 11, BLOCK 1, LOT 26.3

N/F EILEEN ISISON & MATTHEW E. COLLINS  
ASSESSOR'S  
MAP 14, BLOCK 1, LOT 26.2