

**SEPTIC SYSTEM AS-BUILT**

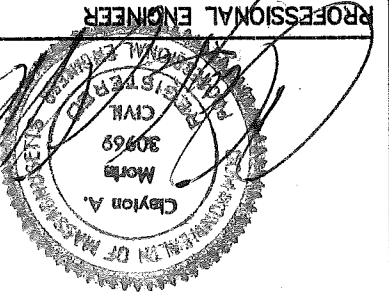
LOCATION: 8 PLUMMER ROAD  
BOXFORD, MA.

DATE: DECEMBER 23, 2013

SCALE: 1" = 40'

INVERT FOUNDATION = 83.72'  
INVERT TANK IN = 83.13'  
INVERT TANK OUT = 82.88'  
INVERT PUMP TANK IN = 82.70'  
INVERT PUMP TANK OUT = 82.95'  
INVERT D-BOX IN = 86.46'  
INVERT D-BOX OUT = 86.28'  
INVERT LINE BEGIN = 86.18'  
INVERT LINE END = 86.00'

I CERTIFY THAT THE SEWAGE DISPOSAL SYSTEM HAS  
HAS BEEN INSTALLED IN ACCORDANCE WITH THE  
PROVISIONS OF 310 CMR 15.00 (TITLE 5) AND THE  
APPROVED DESIGN PLAN.



DATE: 12-23-2013

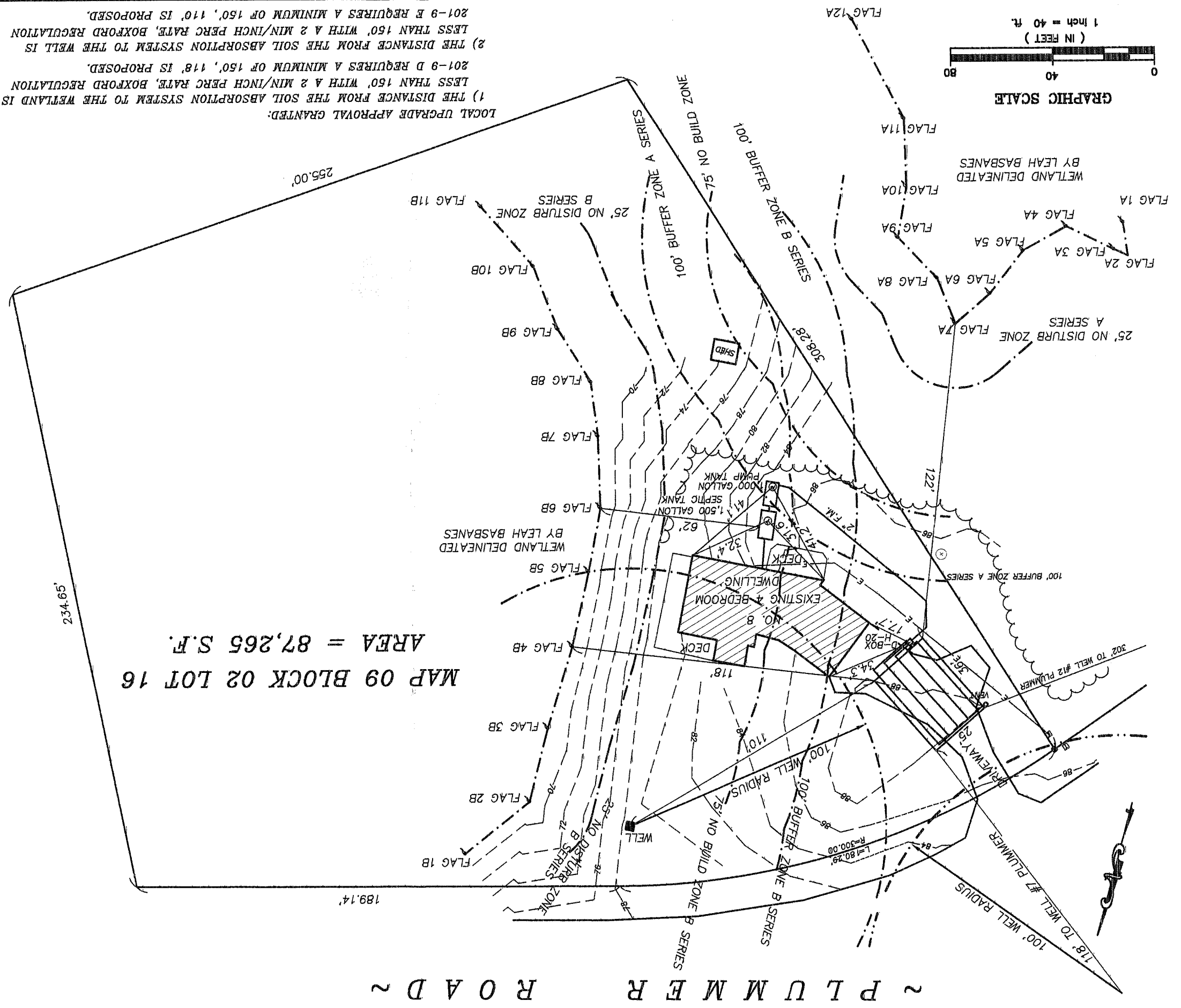
**ENGINEERING & SURVEYING SERVICES**

70 BAILEY COURT  
HAVERHILL, MA. 01832

978-556-0284

**~ PLUMMER ROAD ~**

**MAP 09 BLOCK 02 LOT 16**  
**AREA = 87,265 S.F.**



LOCAL UPGRADE APPROVAL GRANTED:  
 (1) THE DISTANCE FROM THE SOIL ABSORPTION SYSTEM TO THE WETLAND IS  
 LESS THAN 150' WITH A 2 MIN/INCH PERC RATE, BOXFORD REGULATION  
 201-9 D REQUIRES A MINIMUM OF 150', 118' IS PROPOSED.  
 (2) THE DISTANCE FROM THE SOIL ABSORPTION SYSTEM TO THE WELL IS  
 LESS THAN 150' WITH A 2 MIN/INCH PERC RATE, BOXFORD REGULATION  
 201-9 E REQUIRES A MINIMUM OF 150', 110' IS PROPOSED.