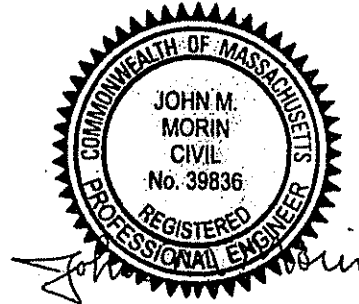


SCHEDULE OF TIE DISTANCES

DESCRIPTION	A	B	C
TANK IN (1)	38.7'	21.0'	51.2'
TANK CENTER (2)	35.8'	23.3'	54.9'
TANK OUT (3)	33.0'	26.0'	58.5'
WATERLOO (4)	25.8'	33.9'	68.6'
WATERLOO (5)	26.5'	39.3'	72.9'
WATERLOO (6)	22.5'	42.3'	77.7'
WALL CORNER (7)	41.5'	54.2'	80.2'
WALL CORNER (8)	39.3'	63.2'	93.2'
WALL CORNER (9)	87.3'	102.9'	118.7'
WALL CORNER (10)	88.3'	97.7'	108.8'
OBSERVATION PORT (11)	63.0'	78.4'	98.6'

Note:

- This plan has been prepared to accompany a request for a Certificate of Compliance to the Boxford Conservation Commission under DEP File Number 114-1172.



7/21/14

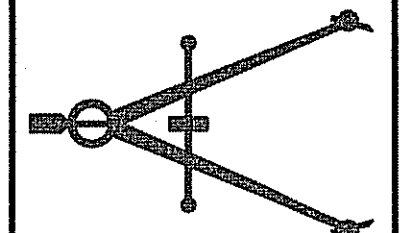
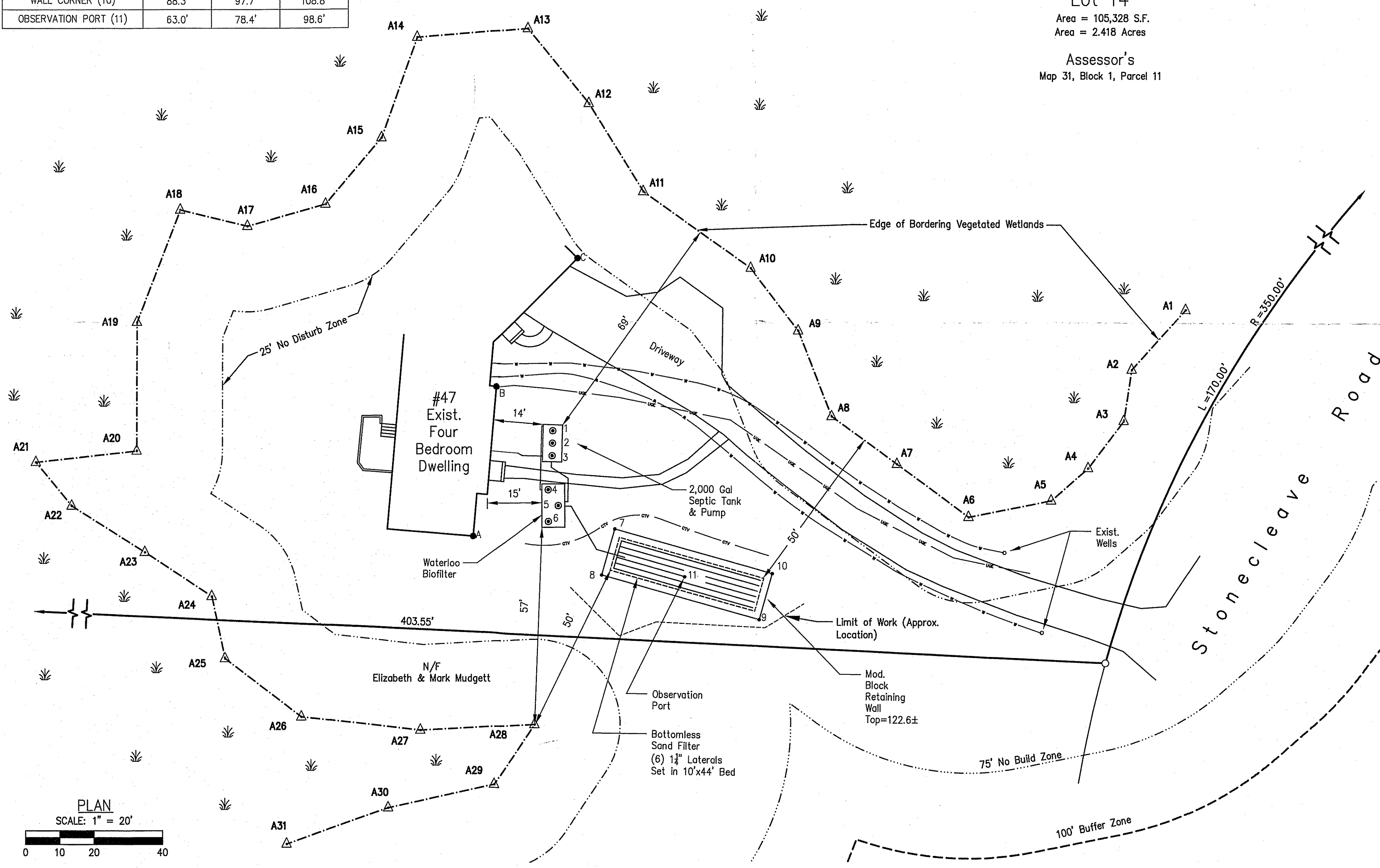
N/F
Wendy & Peter Carlson

360.30'

Lot 14

Area = 105,328 S.F.
Area = 2.418 Acres

Assessor's
Map 31, Block 1, Parcel 11



The Morin-Cameron GROUP, INC.
CIVIL ENGINEERS | ENVIRONMENTAL CONSULTANTS
LAND SURVEYORS | LAND USE PLANNERS
447 BOSTON STREET - U.S. ROUTE 1, TOPSFIELD, MASSACHUSETTS 01963
P: 978-887-8585, F: 978-887-3480, W: WWW.MORINCAMERON.COM

DRAFTED BY: WAS
CHECKED BY: JMM
APPROVED BY: JMM
SCALE: 1"=20'
DATE: JULY 21, 2014

No.	Description	Date

Plan of Land in Boxford, Mass.
Showing
As-Built Site Conditions
47 Stonecleave Road
Prepared For
Norman Kneissler

Proj. No. #3145
Sheet No. 1 Of 1

