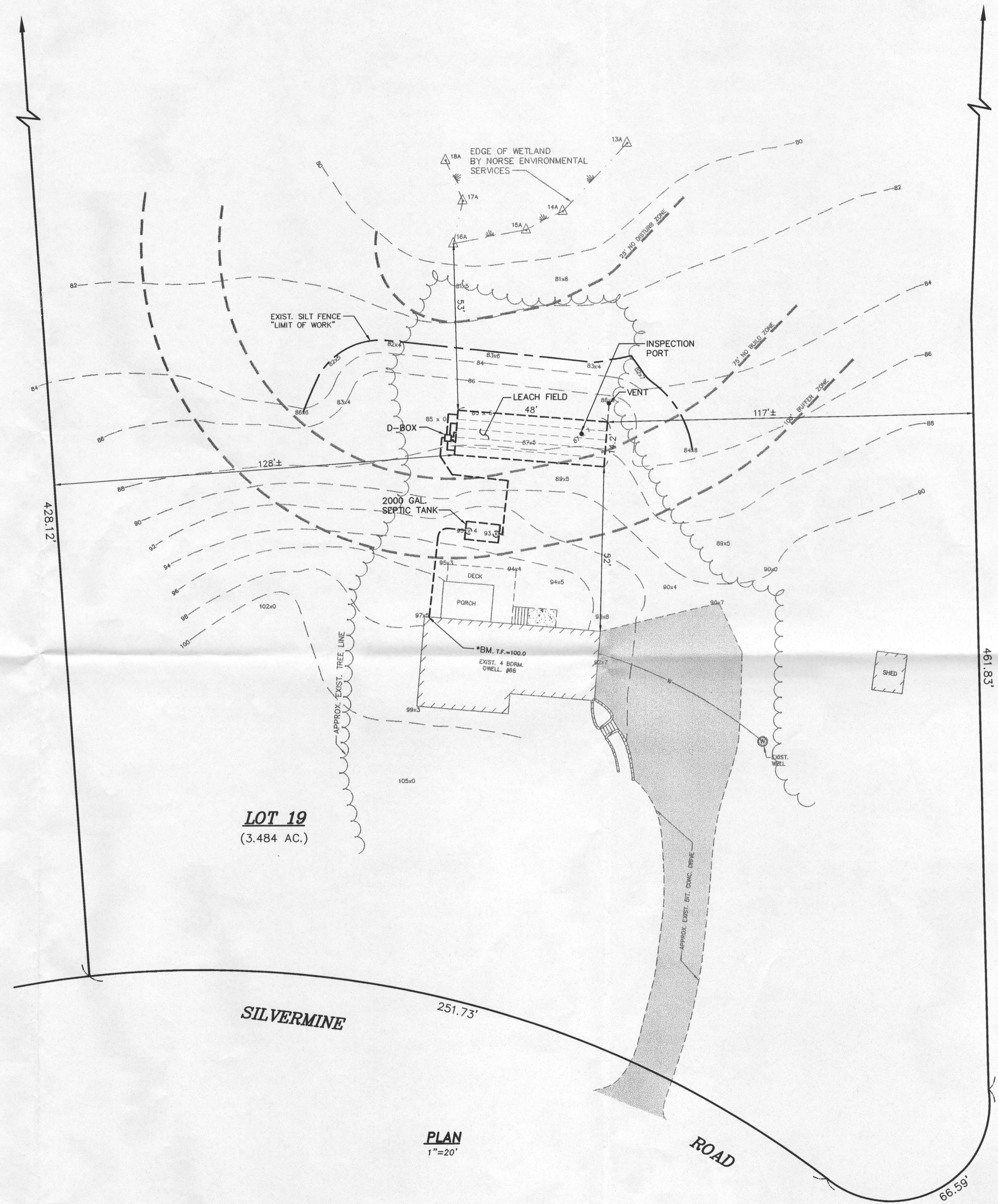
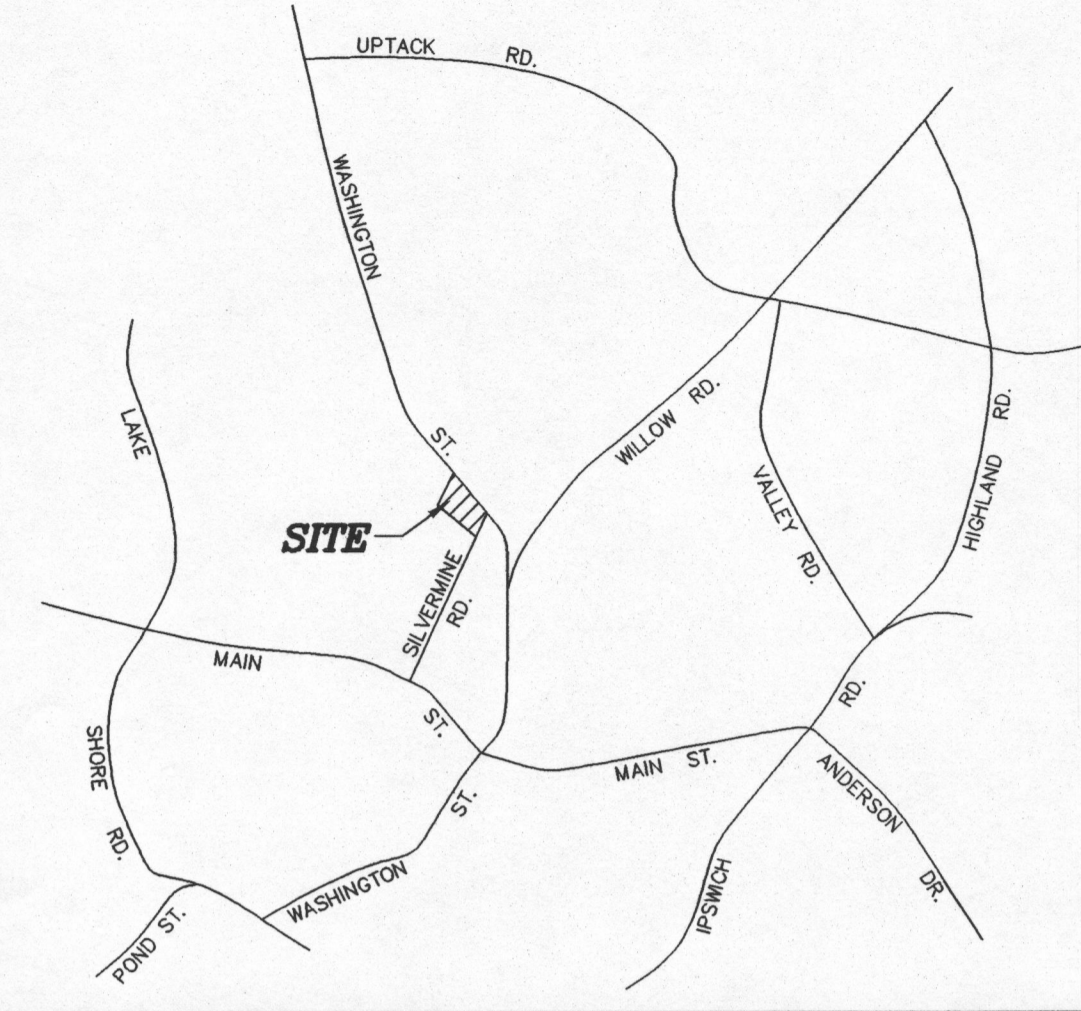


LOCUS MAP

NOT TO SCALE

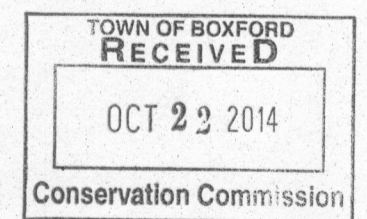


LOT 19
(3.484 AC.)

PLAN
1"=20'

NOTES

1. PURPOSE OF THIS PLAN IS TO ACCOMPANY A REQUEST FOR CERTIFICATE OF COMPLIANCE FROM THE BOXFORD CONSERVATION COMMISSION
2. THE PROPERTY AND WORK IS SUBJECT TO AN ORDER OF CONDITIONS ISSUED BY THE BOXFORD CONSERVATION COMMISSION ON 2-24-2014 DEP FILE #114-1177



AS-BUILT PLAN OF LAND
IN
BOXFORD, MASS.
AS PREPARED FOR
DAVE FLOUTON
68 SILVERMINE ROAD

SCALE: AS SHOWN
ASSESSORS MAP # 6 LOT 7 DATE: 10-16-14
SUBDIVISION LOT # 19

MERRIMACK ENGINEERING SERVICES
66 PARK STREET
ANDOVER, MASSACHUSETTS 01810 1 OF 2

NO.	DATE	BY	REVISIONS:

E:\DWG\168 SILVERMINE RD.-BOXFORD.dwg